

Complete Structural Package™ - Case Study

PROJECT: Otarre Medical Office Building

Owner: Lexington Medical Center, West Columbia, SC
Architect: Perkins + Will, Charlotte, NC
Contractor: Hood Construction, Columbia, SC
Fabricator: D&T Steel, Pelion, SC

Description:

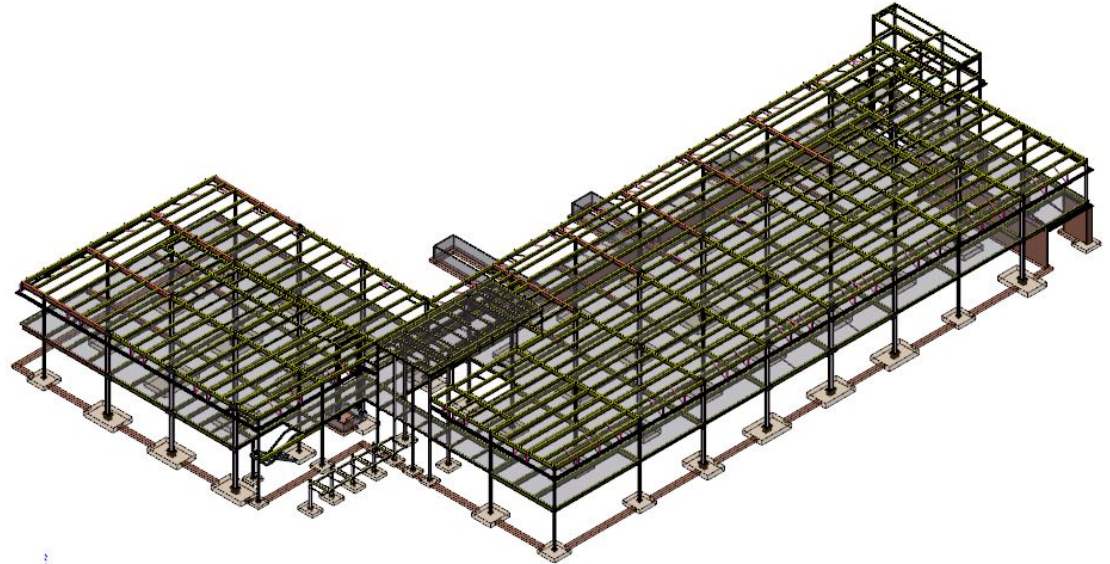
A two story, 73,000 square foot, steel framed building. The floor system is composite steel beams with 2" metal deck and 3-1/4" lightweight concrete. The lateral system is welded SidePlate™ moment frames (R=3). Foundations are spread footings.

Tonnage:

Main structural frame - 318 tons
All-inclusive – 368 tons

Type of Project:

Contractor: Hired prior to completion of design via RFQ.
Detailing: FEG worked directly for the contractor.
Fabricator: Bid at completion of Construction Documents.



Benefits/Challenges/Timeline (or Noteworthy Project Specifics):

- Structural model shared with the detailer multiple times during design.
- Structural steel package was bid from 2D construction documents, electronic files from detailer's model and BIM take-off for main members.
- Meeting with fabricator June 26, 2013. Steel issued for fabrication July 19 2013
 - **Five(5)** week turnaround from initial fabricator meeting to IFF drawings.
- Steel delivery started the week of October 7, 2013.
- SidePlate™ moment connection did not slow the process of getting decking installed.
- No RFIs or change orders

What others are saying

"The detailed drawings were some of the best ever. Any question we had got resolved quickly. All electronic files were excellent. The SidePlate™ guys were easy to work with. The whole process was a good experience for D & T. We saved erection time in the field."

Travis Crumpton, President, D & T Steel, Inc. (fabricator)